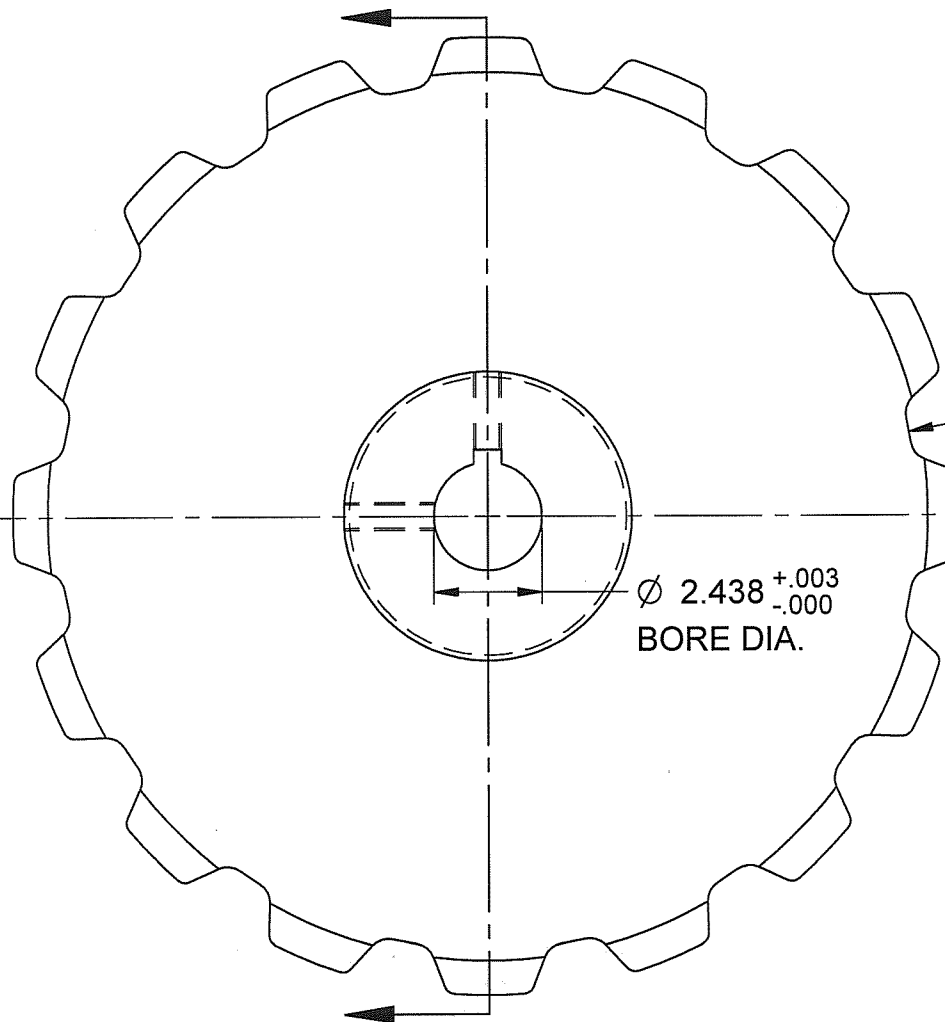
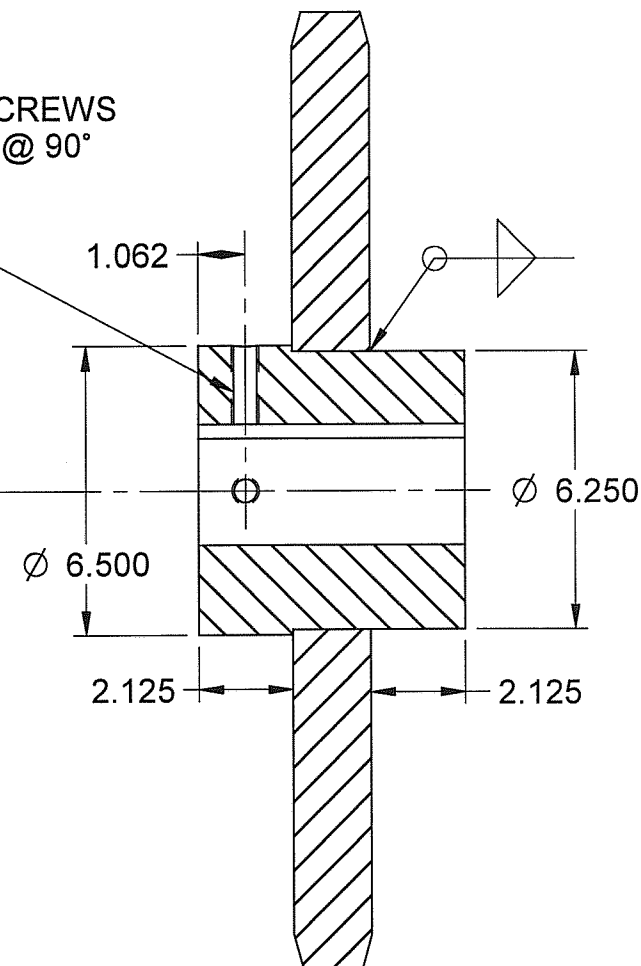


SP-1295

PITCH	BARREL DIAMETER	NUMBER OF TEETH	PLATE THICKNESS	SIDE SLOPE DISTANCE	SIDE SLOPE ANGLE	PITCH DIAMETER	OUTSIDE DIAMETER	PITCH LINE CLEARANCE	PRESSURE ANGLE	WORKING FACE	POCKET RADIUS	TOPPING RADIUS
4.000 in	1.000 in	16.00	1.750 in	0.210 in	15.00 °	20.503 in	21.500 in	0.500 in	19.00 °	0.640 in	0.500 in	2.000 in



5/8-11 UNC SET SCREWS
ON KEYWAY AND @ 90°
AS SHOWN



KEYWAY ON
CENTERLINE OF
TOOTH AS SHOWN

LENGTH THRU BORE	KEYWAY WIDTH	KEYWAY HEIGHT
6.000 in	0.625 in	0.313 in

MASTER B/P

CHAIN TYPE: 102-B CHAIN
FLAME HARDEN TEETH TO 50 Rc MIN

REV. 2
5-18-2007

WT: 195 lbm



U.S. TSUBAKI, INC.
ENGINEERING CHAIN DIVISION
SANDUSKY, OHIO

ELEVATING
CONVEYING
DRIVE CHAINS
AND SPROCKETS

102BC16 SPROCKET WITH 2.4375" BORE
KEYWAY & 2 SET SCREWS.

DRAWN BY	DATE	CHECK BY	APPRV BY	DATE	3RD ANGLE PROJ.	DRAWING NUMBER
CDL	7-30-97	KT	RV	5/21/07	⊕	SP-1295